

# The Self-Healing Supply Chain



---

Improve supply chain performance by automatically closing the gap between design and actual results with the Self-Healing Supply Chain™, part of Kinaxis® RapidResponse®.

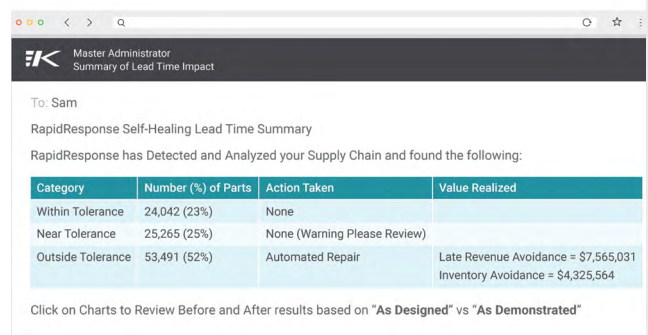
The Self-Healing Supply Chain takes your ability to know sooner and act faster even further by examining supply chain design assumptions, comparing those to actual performance and then closing the gap automatically using machine learning. Spot potential issues sooner. Project future impacts on your business faster. And realize increased profitability with automatic monitoring and adjustments.



## Enhance performance

Stop performance degradation sooner with automatic correction of inaccurate supply chain design assumptions.

## DETECT



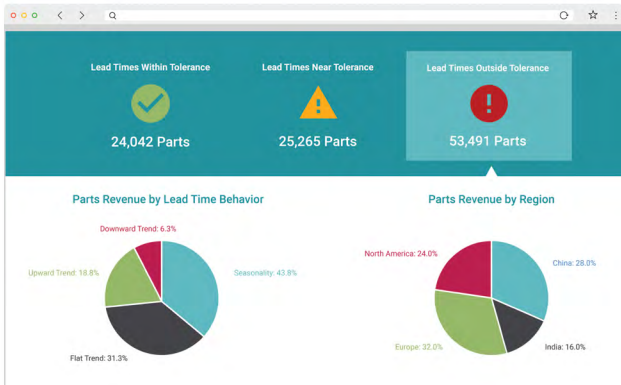
## Avoid risks

Understand the impact of incorrect design assumptions like lead times on critical business metrics faster.

## ANALYZE



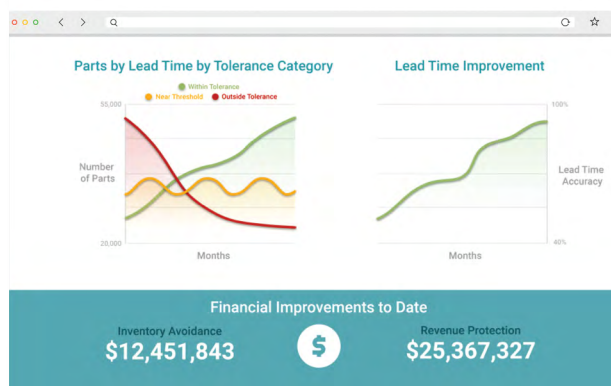
## HEAL



## Boost productivity

Focus on what matters with alerts on high-impact exceptions between designed and actual supply chain performance.

## REPEAT



## Drive profitability

Increase business growth with automatic, continuous improvements to the accuracy of planning design assumptions.

“

**It is SigmaPoint's pleasure to be an early adopter of the Self-Healing Supply Chain. Kinaxis RapidResponse has always been light years ahead of its time in supply chain software technology and advanced concepts, and this innovation proves it.**



**Leah Slaughter**

Vice President of Supply Chain,  
SigmaPoint Technologies Inc.

## What can the Self-Healing Supply Chain do?

- Detect inaccurate design assumptions such as lead times using historical data so you know where to focus your attention first
- Alert you when discrepancies are discovered, providing a summary of the findings and recommended actions so you can get moving on next steps
- Analyze and provide a visualization of potential impacts on critical business KPIs so you understand how making corrections can help your success
- Suggest actions for design inconsistencies outside the automatic correction thresholds so you can collaborate with stakeholders and suppliers to quickly address outstanding issues
- Automatically monitor and adjust design inputs based on personalized tolerance thresholds so your supply chain is always in top health, letting you see increasing value over time

## How the Self-Healing Supply Chain is different

### Built with a practical use case in mind

Advanced algorithms won't benefit you if they aren't performing a function that actually improves your supply chain performance.

### Developed with customer input

Academics can only provide so much insight. There's something to be said for hands on testing by peers with similar goals.

### Designed to focus on data accuracy first

If the data's wrong, the results will be too. It's as simple as that.

### Powered by a trusted planning platform

RapidResponse has been revolutionizing supply chain planning for years. Our unique concurrent planning and versioning capabilities are something you can't get anywhere else.

Ready to start building your own Self-Healing Supply Chain?  
Visit [www.kinaxis.com](http://www.kinaxis.com) to learn how.



Kinaxis World Headquarters  
700 Silver Seven Road  
Ottawa, Ontario K2V 1C3  
Canada  
[www.kinaxis.com](http://www.kinaxis.com)

tel: +1 613.592.5780  
toll free: +1 866.236.3249  
support: +1 866.463.7877  
fax: +1 613.592.0584  
email: [info@kinaxis.com](mailto:info@kinaxis.com)

This brochure is accurate as of the date published and may be updated by Kinaxis from time to time at its discretion.

Copyright © 2018 Kinaxis Inc. All rights reserved. Kinaxis, the Kinaxis logo and RapidResponse are registered trademarks of Kinaxis Inc. 05.18