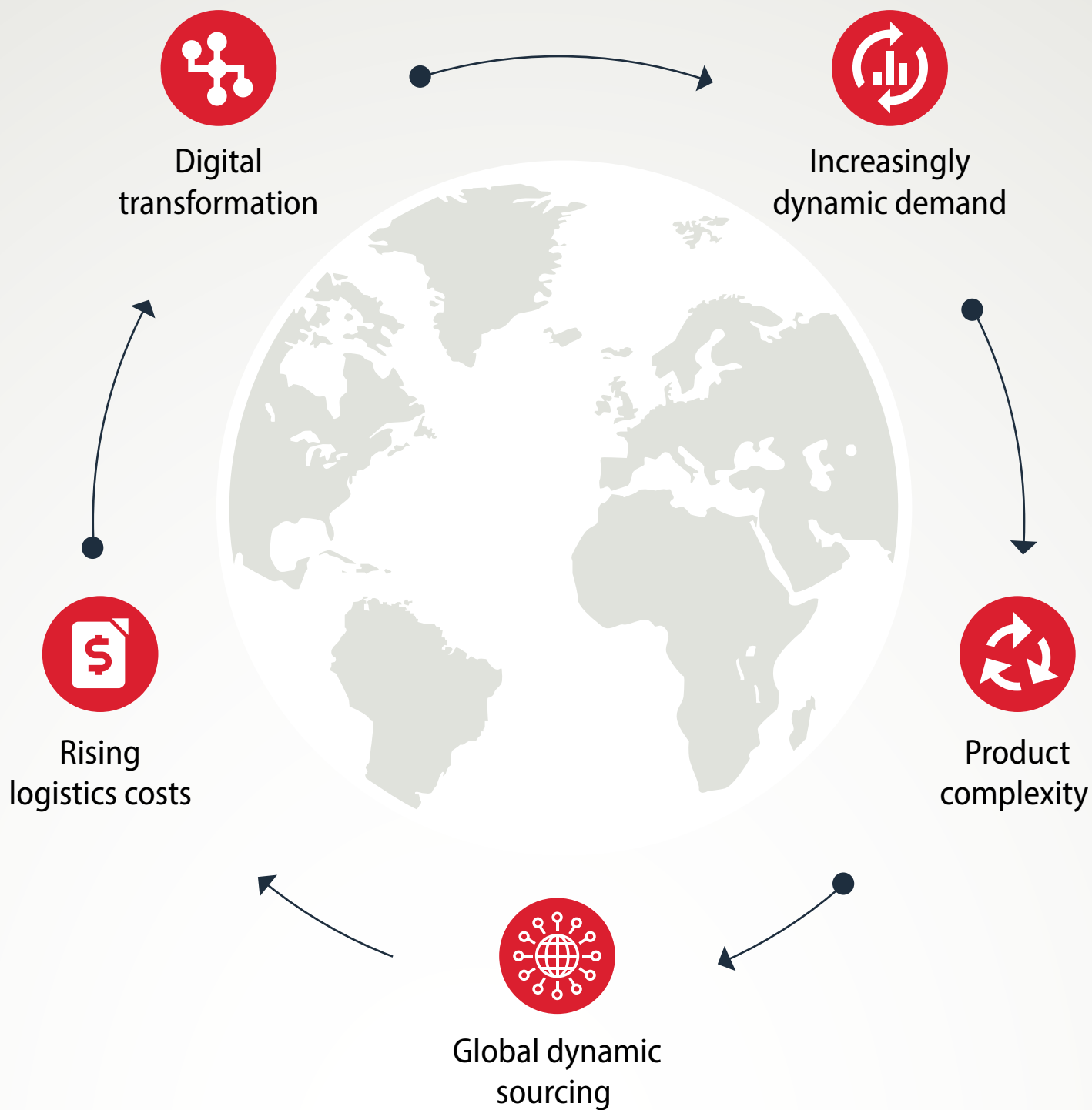


What are your supply chain pain points?

Major, unplanned events can shut down or shift production. Coupling that with the complexity of global networks, disconnected processes and increasing cost pressure, automotive organizations can struggle to effectively plan their supply chains.



KNOW SOONER, ACT FASTER WITH KINAXIS®

Control your costs with always-on analytics

Gauge the impact of unexpected changes as soon as they are recorded so you can take action to reduce shipping and inventory costs.

Easily manage complex BOMs

Manage configurations and associated rules inside your planning engine so you can respond in real time to configuration changes.

Integrate data from multiple ERPs

With all your data on a single platform, plans get sharper, execution systems are in the loop, and your entire supply chain has confidence in its capacity to deliver.

Factor the impact of supply constraints

With capacity and materials constraints visible at each stage of production and with flexible modeling, you can test multiple options and prioritize effectively.

See your global supply chain from end to end

Full visibility gives you insight into planned and current demand, inventory, capacity, constraints and supply at every level of your product hierarchy.

Digital transformation can happen faster than you think.

We can get you there sooner with the fastest, successful end-to-end advanced planning go-lives on the market. [Talk to us today to find out how.](#)